



Latest Erie Data

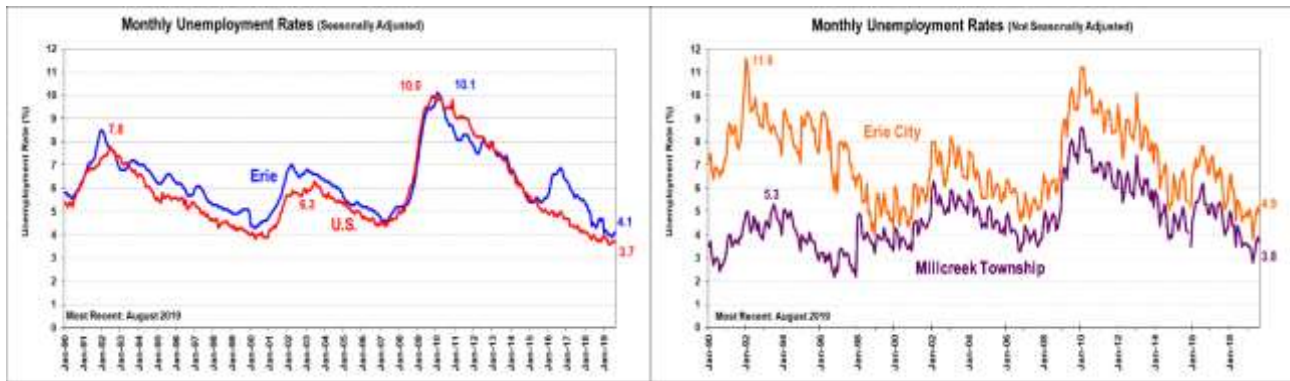
Last updated October 3, 2019

(All data are for Erie County unless otherwise indicated)

ERIE is a research center of the
Black School of Business at Penn State Behrend

| As of October 2019: | Latest (NSA)* | Change from Previous Month | Latest (SA)* | Change from Previous Month |
|--|---------------|----------------------------|--------------|----------------------------|
| Unemployment Rate (Erie County) | 4.3% | ↓ 0.4% | 4.1% | ↑ 0.1% |
| -Erie City | 4.9% | ↓ 0.3% | --- | --- |
| -Millcreek Township | 3.7% | ↓ 0.2% | --- | --- |
| -U.S. | 3.8% | ↓ 0.2% | 3.7% | - 0.0% |
| -Pennsylvania | 4.5% | ↓ 0.1% | 3.9% | - 0.0% |
| Labor Force | 130,700 | ↓ 1,100 | 129,800 | ↑ 100 |
| Employment | 125,100 | ↓ 500 | 124,500 | - 0 |
| Unemployment | 5,600 | ↓ 600 | 5,300 | ↑ 100 |

*NSA: Not Seasonally Adjusted; SA: Seasonally Adjusted. SA data for Erie City and Millcreek Township are unavailable. Erie, Pennsylvania, and U.S. data provided by [PA Department of Labor and Industry](#).
Note: Latest Erie Data are preliminary and subject to revision next month



| | Latest Data | Change from Previous Month | Change from Prior Year |
|--|----------------|----------------------------|--------------------------|
| Manufacturing Employment (NSA) | 19,500 | ↑ 0.1% | |
| Population, 2018 | 272,061 | ↓ 0.9% | 0.9% from 274,541 |
| Total Personal Income, 2017 | \$11.5 million | ↑ 1.1% | 1.1% from \$11.4 million |
| Income Per Capita, 2017 | \$41,887 | ↑ 1.8% | 1.8% from \$41,151 |
| -U.S., 2017 | \$51,640 | ↑ 3.63% | 3.63% from \$49,831 |
| -Erie income per capita as a % of U.S., 2016 | 81.1% | ↓ 1.5% | 1.5% from 82.6% |
| Bankruptcies filed at U.S. Bankruptcy Court in Erie, 2017 | 1,367 | ↑ 10.8% | |
| Number of Business Establishments with Employees, 2016 | 6,191 | ↑ 0.5% | 0.5% from 6,163 |
| -Average Number of Employees per Establishment | 18.49 | ↓ 0.2% | 0.2% from 18.52 |
| Number of Non-employer Establishments , 2017 | 13,956 | ↓ 0.9% | 0.9% from 13,838 |
| Relative Cost of Living in Erie County , 2015, Annual Average | | | |
| -Composite Index (all items) Erie County: | 102.2 | | |
| -Average of 281 U.S. urban areas: | 100.0 | | |
| Source C2ER Cost of Living Index | | | |

Link to List of Erie County's Top 50 Employers:

<http://www.workstats.dli.pa.gov/Products/Top50/Pages/default.aspx>