



# Latest Erie Data

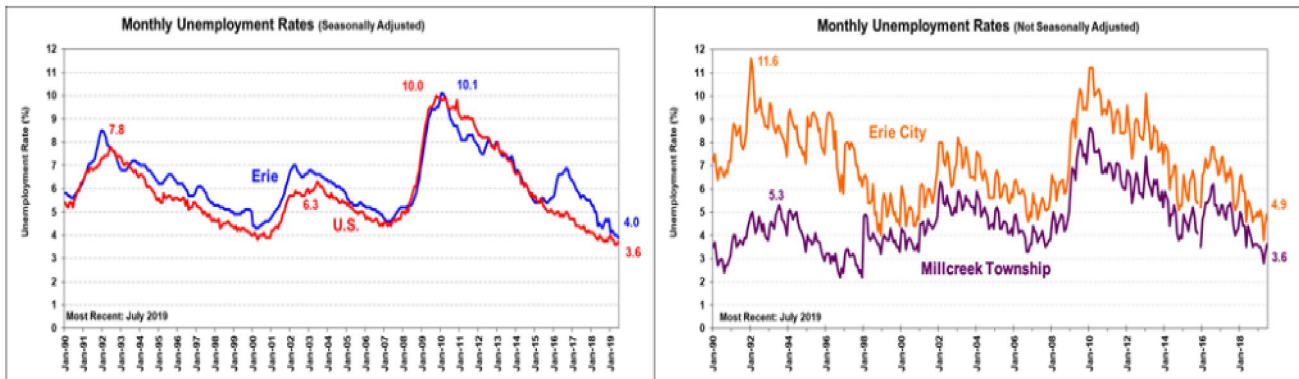
Last updated August 27, 2019

(All data are for Erie County unless otherwise indicated)

ERIE is a research center of the Black School of Business at Penn State Behrend

As of August 2019:	Latest (NSA)*	Change from Previous Month	Latest (SA)*	Change from Previous Month
<b>Unemployment Rate</b> (Erie County)	4.7%	↑ 0.5%	4.0%	↑ 0.1%
-Erie City	5.2%	↑ 0.3%	---	---
-Millcreek Township	3.9%	↑ 0.3%	---	---
-U.S.	4.0%	↑ 0.2%	3.7%	- 0.0%
-Pennsylvania	4.5%	↑ 0.5%	3.9%	- 0.1%
<b>Labor Force</b>	131,800	↑ 1,000	129,700	- 0
<b>Employment</b>	125,600	↑ 300	124,500	↓ 100
<b>Unemployment</b>	6,200	↑ 700	5,200	↑ 100

\*NSA: Not Seasonally Adjusted; SA: Seasonally Adjusted. SA data for Erie City and Millcreek Township are unavailable. Erie, Pennsylvania, and U.S. data provided by [PA Department of Labor and Industry](#). Note: Latest Erie Data are preliminary and subject to revision next month



	Latest Data	Change from Previous Month	Change from Prior Year
<b>Manufacturing Employment (NSA)</b>	19,400	↓	-0.1%
<b>Population, 2018</b>	272,061	↓	0.9% from 274,541
<b>Total Personal Income, 2016</b>	\$11.3 million	↑	0.8% from \$11.2 million
<b>Income Per Capita, 2016</b>	\$40,764	↑	1.4% from \$40,186
-U.S., 2016	\$51,075	↑	1.7% from \$50,226
-Erie income per capita as a % of U.S., 2016	79.8%	↓	0.2% from 80.0%
<b>Bankruptcies</b> filed at U.S. Bankruptcy Court in Erie, 2017	1,367	↑	10.8%
<b>Number of Business Establishments</b> with Employees, 2016	6,191	↑	0.5% from 6,163
-Average Number of Employees per Establishment	18.49	↓	0.2% from 18.52
<b>Number of Non-employer Establishments</b> , 2017	13,956	↓	0.9% from 13,838
<b>Relative Cost of Living in Erie County</b> , 2015, Annual Average			
-Composite Index (all items) Erie County:	102.2		
-Average of 281 U.S. urban areas:	100.0		
Source <a href="#">C2ER Cost of Living Index</a>			

Link to List of Erie County's Top 50 Employers:

<http://www.workstats.dli.pa.gov/Products/Top50/Pages/default.aspx>