

Latest Erie Data

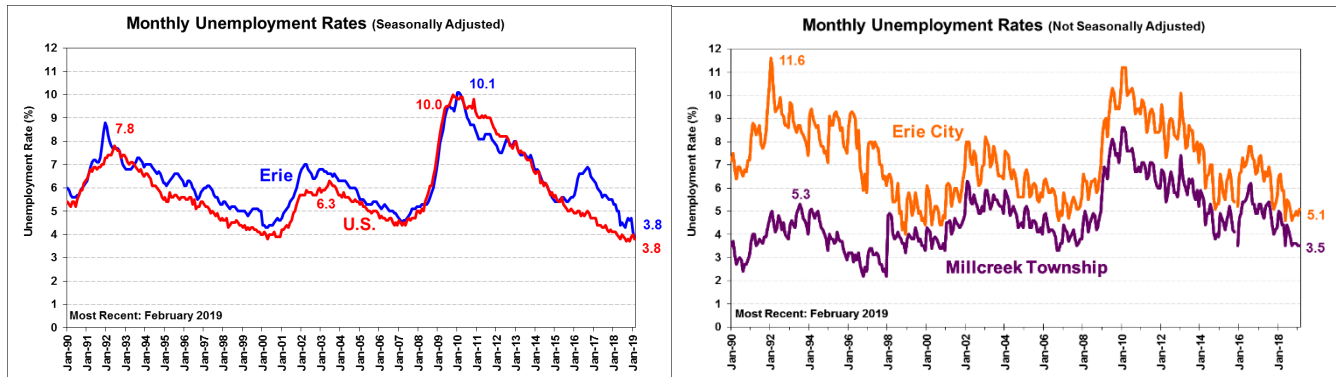
Last updated April 2, 2019

(All data are for Erie County unless otherwise indicated)

ERIE is a research center of the
Black School of Business at Penn State Behrend

As of February 2019:	Latest (NSA)*	Change from Previous Month	Latest (SA)*	Change from Previous Month
Unemployment Rate (Erie County)	4.5%	↓ 0.2%	3.8%	↓ 0.3%
-Erie City	5.1%	↑ 0.3%	---	---
-Millcreek Township	3.5%	- 0.0%	---	---
-U.S.	4.1%	↓ 0.3%	3.8%	↓ 0.2%
-Pennsylvania	4.2%	- 0.0%	4.0%	↓ 0.1%
Labor Force	129,800	↑ 900	129,900	↑ 500
Employment	123,900	↑ 1,000	125,000	↑ 800
Unemployment	5,800	↓ 200	4,900	↓ 300

*NSA: Not Seasonally Adjusted; SA: Seasonally Adjusted. SA data for Erie City and Millcreek Township are unavailable. Erie, Pennsylvania, and U.S. data provided by [PA Department of Labor and Industry](#).
Note: Latest Erie Data are preliminary and subject to revision next month



	Latest Data	Change from Previous Month	Change from Prior Year
Manufacturing Employment (NSA)	19,700	-	0.0
Population, 2017	274,541	↓	0.6% from 276,321
Total Personal Income, 2016	\$11.3 million	↑	0.8% from \$11.2 million
Income Per Capita, 2016	\$40,764	↑	1.4% from \$40,186
-U.S., 2016	\$51,075	↑	1.7% from \$50,226
-Erie income per capita as a % of U.S., 2016	79.8%	↓	0.2% from 80.0%
Bankruptcies filed at U.S. Bankruptcy Court in Erie, 2017	1,367	↑	10.8%
Number of Business Establishments with Employees, 2016	6,191	↑	0.5% from 6,163
-Average Number of Employees per Establishment	18.49	↓	0.2% from 18.52
Number of Non-employer Establishments , 2016	13,838	↓	0.0% from 13,841
Relative Cost of Living in Erie County , 2015, Annual Average			
-Composite Index (all items) Erie County:	102.2		
-Average of 281 U.S. urban areas:	100.0		
Source C2ER Cost of Living Index			

Link to List of Erie County's Top 50 Employers:

<http://www.workstats.dli.pa.gov/Products/Top50/Pages/default.aspx>