



Latest Erie Data

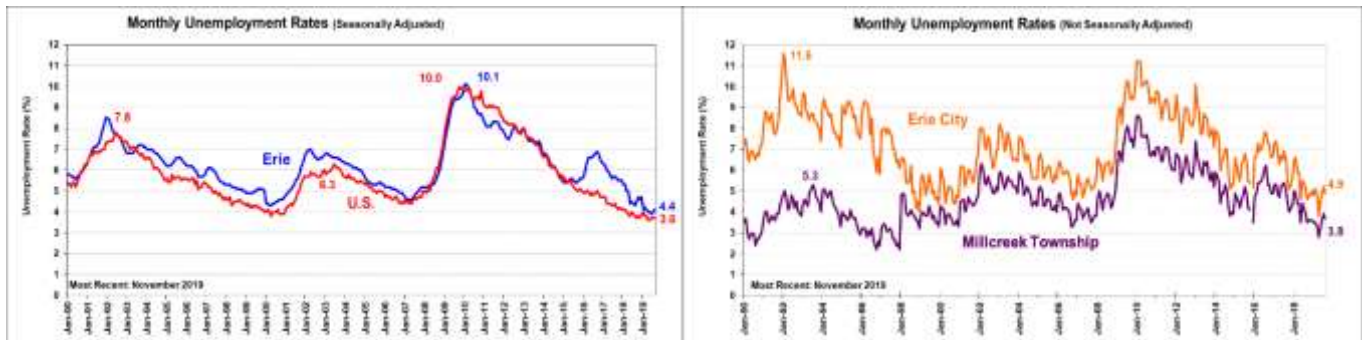
Last updated December 2, 2019

(All data are for Erie County unless otherwise indicated)

ERIE is a research center of the Black School of Business at Penn State Behrend

As of November 2019:	Latest (NSA)*	Change from Previous Month	Latest (SA)*	Change from Previous Month
Unemployment Rate (Erie County)	4.3%	↑ 0.5%	4.4%	↑ 0.2%
-Erie City	4.9%	↑ 0.6%	---	---
-Millcreek Township	3.8%	↑ 0.4%	---	---
-U.S.	3.3%	- 0.0%	3.6%	↑ 0.1%
-Pennsylvania	4.3%	↑ 0.4%	4.2%	↑ 0.2%
Labor Force	131,200	↑ 400	130,400	↑ 300
Employment	125,500	↓ 300	124,700	- 0
Unemployment	5,700	↑ 700	5,700	↑ 300

*NSA: Not Seasonally Adjusted; SA: Seasonally Adjusted. SA data for Erie City and Millcreek Township are unavailable. Erie, Pennsylvania, and U.S. data provided by [PA Department of Labor and Industry](#). Note: Latest Erie Data are preliminary and subject to revision next month



	Latest Data	Change from Previous Month	Change from Prior Year
Manufacturing Employment (NSA)	19,100	↓ 0.2%	
Population, 2018	272,061	↓	0.9% from 274,541
Total Personal Income, 2018	\$17.8 billion	↑	5.3% from \$16.9 billion
Income Per Capita, 2018	\$44,903	↑	6.1% from \$42,308
-U.S., 2018	\$54,446	↑	4.9% from \$51,885
-Erie income per capita as a % of U.S., 2018	82.3%	↑	1.2% from 81.1%
Bankruptcies filed at U.S. Bankruptcy Court in Erie, 2017	1,367	↑	10.8%
Number of Business Establishments with Employees, 2017	6,197	↑	0.1% from 6,191
-Average Number of Employees per Establishment	18.59	↑	0.5% from 18.49
Number of Non-employer Establishments , 2017	13,956	↓	0.9% from 13,838
Relative Cost of Living in Erie County , 2015, Annual Average			
-Composite Index (all items) Erie County:	102.2		
-Average of 281 U.S. urban areas:	100.0		
Source C2ER Cost of Living Index			

Link to List of Erie County's Top 50 Employers:

<http://www.workstats.dli.pa.gov/Products/Top50/Pages/default.aspx>