

Latest Erie Data

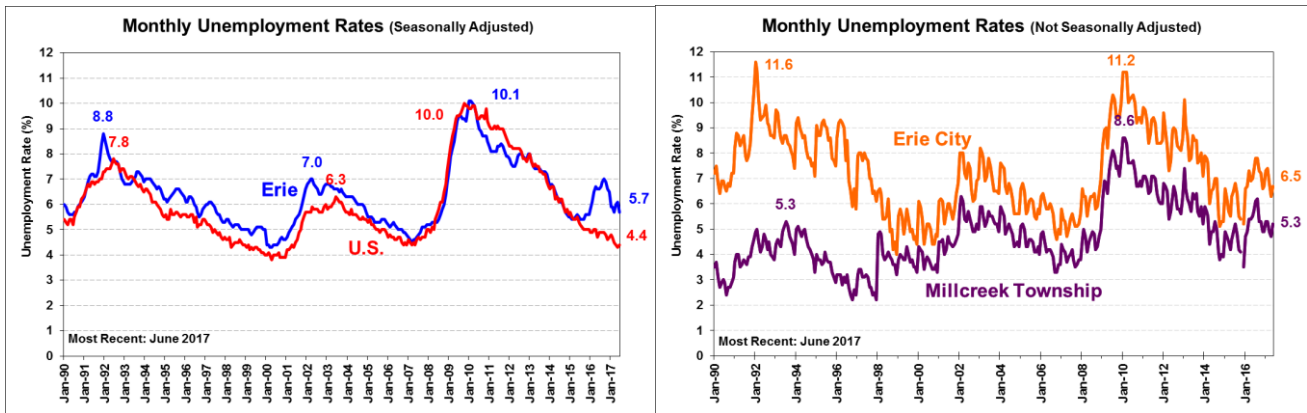
Last updated August 7, 2017

(All data are for Erie County unless otherwise indicated)

ERIE is a research center of the
Black School of Business at Penn State Behrend

As of June 2017:	Latest (NSA)*	Change from Previous Month	Latest (SA)*	Change from Previous Month
Unemployment Rate (Erie County)	5.9%	↓ 0.1%	5.7%	↓ 0.4%
-Erie City	6.5%	↓ 0.2%	---	---
-Millcreek Township	5.3%	↑ 0.1%	---	---
-U.S.	4.5%	↑ 0.4%	4.4%	↑ 0.1%
-Pennsylvania	5.1%	↓ 0.1%	5.0%	- 0.0%
Labor Force	132,800	↑ 100	131,900	↓ -500
Employment	125,100	↑ 200	124,400	- 0
Unemployment	7,800	↓ 100	7,500	↓ -600

*NSA: Not Seasonally Adjusted; SA: Seasonally Adjusted. SA data for Erie City and Millcreek Township are unavailable. Erie, Pennsylvania, and U.S. data provided by [PA Department of Labor and Industry](#).
Note: Latest Erie Data are preliminary and subject to revision next month



	Latest Data	Change from Previous Month	Change from Prior Year
Manufacturing Employment (NSA)	19,400	↑ 200	
As of February, 2017			
Population, 2015	278,045	↓	0.1% from 278,443
Total Personal Income, 2015	\$13.7 million	↑	4.7% from \$13.1 million
Income Per Capita, 2015	\$40,425	↑	4.1% from \$38,823
-U.S., 2015	\$48,112	↑	3.7% from \$46,414
-Erie income per capita as a % of U.S., 2015	84.0%	↓	0.4% from 83.6%
Bankruptcies filed at U.S. Bankruptcy Court in Erie, 2016	1,234	↓	7.3%
Number of Business Establishments with Employees, 2014	6,176	↓	0.9%
-Average Number of Employees per Establishment	18.24	↓	0.1%
Number of Non-employer Establishments, 2014	13,951	↑	1.1% from 13,801
Relative Cost of Living in Erie County, 2015, Annual Average			
-Composite Index (all items) Erie County:	102.2		
-Average of 281 U.S. urban areas:	100.0		
Source C2ER Cost of Living Index			

Link to List of Erie County's Top 50 Employers:

<http://www.portal.state.pa.us/portal/server.pt?open=514&objID=1222720&mode=2>